



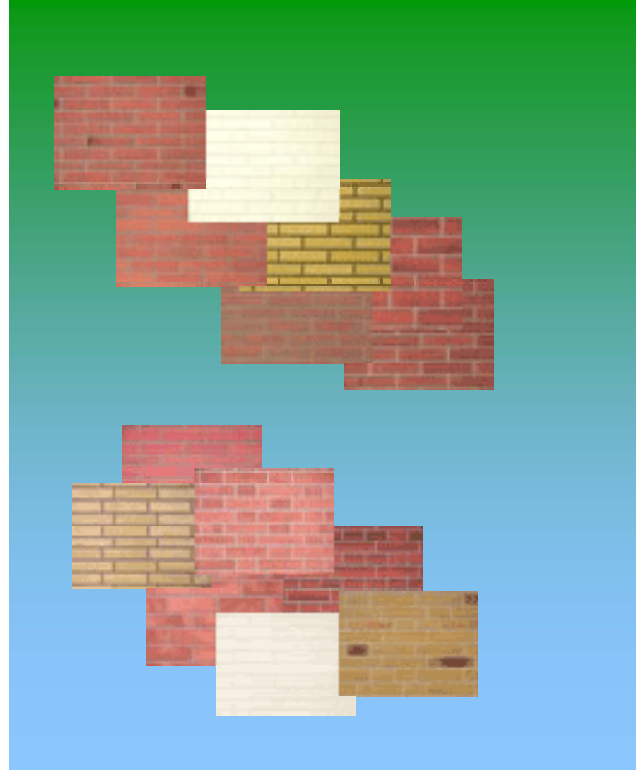
Marmorit UK GmbH 07/2007

Flexible Brick Slip System

The Marmorit Flexible Brick Slip System is designed for use with the Marmorit Render only systems and the Warm Wall Insulation systems. The lightweight design of the slips enables the safe use of a brick-like façade without the need to have cut bricks embedded into the basecoat render.

The slips are made from specially sorted quartz sands and liquid colouring which is highly UV resistant. Available in a range of colours of sizes including 215mm x 65mm and 240mm x 71mm.

The slips are adhesively fixed with a special Poly – Acrylic render EL01 which is available in the colours below



EL01 - ANTHRACITE



EL01 - BROWN



EL01 - GREY



EL01 - LIGHT GREY



EL01 - WHITE

APPLICATION



Apply maximum of 1 m² of the EL01 brick slip mortar render with a 4mm toothed trowel onto the dry Socket SM reinforcing mortar.



Embed the brick slips fully into the EL01 adhesive mortar. Ensure that the joints between each slip is between 10mm and 12mm.



For areas which require a cut brick slip, simply cut to length using a pair of scissors or a sharp knife.



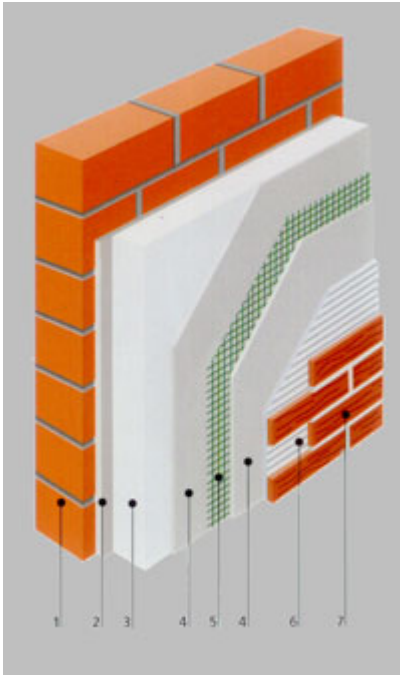
The flexible brick slip can be applied easily around corners or curves, alternatively a preformed corner brick can be used.



To finish the mortar joints, smooth the render with a damp paintbrush, ensuring that all edges are fully embedded.

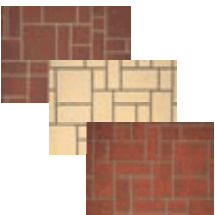


SPECIFICATION

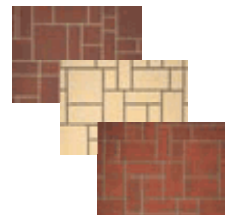


Warm Wall Insulation Build - Up

1. Substrate, masonry, blockwork or framed system
2. Sockel SM bonding mortar 10mm thickness
3. Warm Wall insulation, Mineral Fibre or Tongue and Grooved Polystyrene.
4. Sockel SM reinforcing mortar 5mm thickness with Isogrund primer
5. Marmorit standard glass fibre reinforcing mesh.
6. Brick slip mortar bed render EL01
7. Flexible brick slip EL02



Marmorit UK GmbH
1 Portview Road
Avonmouth
Bristol
BS11 9LS



Telephone 0117 982 1042
Fax 0117 982 3025

Email sales@marmorit.co.uk